

# Royal Palm

MAURITIUS

LEADING  
HOTELS®



Located on the sheltered north coast of Mauritius, the Royal Palm is a peaceful haven for connoisseurs, all the while providing a pleasant, homely feeling. With 69 suites set amid a backdrop of fine-grained sandy beaches and emerald blue waters, the establishment has earned a rightful place among the most refined hotels in the world.

THE MOST PRESTIGIOUS ADDRESS IN THE INDIAN OCEAN

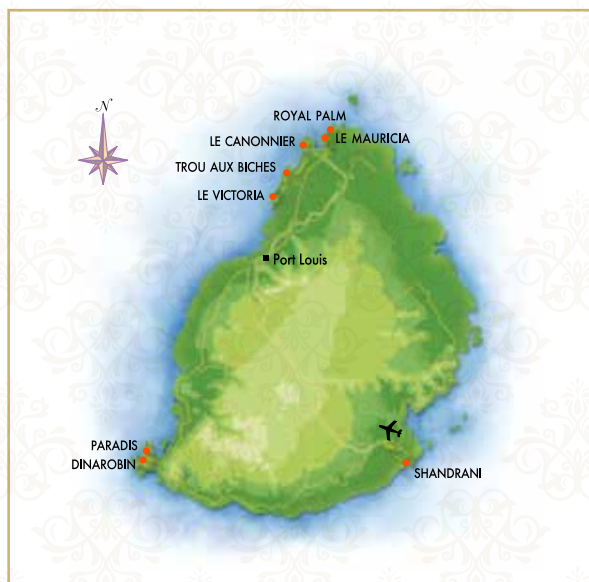






## UNIQUE SELLING POINTS

- A unique site on the sun-drenched north west coast of Mauritius
- Protected from the trade winds, the sea is fringed by a pure white sandy beach
- Impeccable service matches the highest standards in the world
- 3 restaurants offering fine and diverse dining, led by an award-winning chef and winner of the 'Meilleur Ouvrier de France' accolade
- 69 spacious, elegantly decorated suites facing the sea
- 3 heated pools
- A spectacular Royal Suite with private pool
- Spa by Clarins
- Sports centre
- Helipad



### MAURITIUS

#### DISTANCES

- Airport - 75 km
- Port Louis (capital city) - 25 km

#### ROYAL PALM

Grand Baie 30512

MAURITIUS • INDIAN OCEAN

Tel: +230 209 8300

Fax: +230 263 8455

royalpalm@bchot.com

www.royalpalm-hotel.com



## ACCOMMODATION

Your stay is a voyage in itself, at the crossroads between intuitive luxury and exotic refinement. Sleek lines and gentle curves are part of the new timeless, yet so very contemporary décor of the Royal Palm. The 69 suites are available in nine categories ranging from the Junior Suite to the Royal Suite, all looking out onto the sea and bathed in the softness of the setting sun.

### 69 SUITES

- 27 Junior Suites
- 4 Tropical Suites
- 7 Palm Suites
- 15 Ocean Suites
- 3 Garden Suites
- 8 Senior Suites
- 1 Penthouse
- 3 Presidential Suites
- 1 Royal Suite



Presidential Suite

### FEATURES OF THE SUITES

All suites are sea-facing and possess the following facilities:

- Terrace
- Air-conditioning
- Bathroom with bathtub, shower and separate toilets
- Walk-in wardrobe
- Individual safe
- Telephone with international direct dialling
- Fax on request
- Flat screen TV (satellite channels)
- Complimentary WIFI access in the hotel premises
- Complimentary Mini-bar (non-alcoholic drinks)
- Tea & coffee



Tropical Suite

- 24-hour room service
- Laundry, dry-cleaning and pressing service
- Lift located next to the Reception
- On arrival, check-in is at 2 p.m.
- On departure, check-out is at noon.



Senior Suite

## ROOM CAPACITY

### JUNIOR SUITE

- 55 m<sup>2</sup>
- 2 adults + 1 child

### TROPICAL SUITE

- 85 m<sup>2</sup>
- 2 adults + 1 child

### PALM SUITE

- 105 m<sup>2</sup>
- 2 adults + 1 child

### OCEAN SUITE

- 110 m<sup>2</sup>
- 2 adults + 1 child

### GARDEN SUITE

- 130 m<sup>2</sup>
- 2 adults + 2 children

### SENIOR SUITE

- 120 m<sup>2</sup>
- 2 adults + 1 child

Various possibilities of connecting suites to accommodate families.

### PENTHOUSE

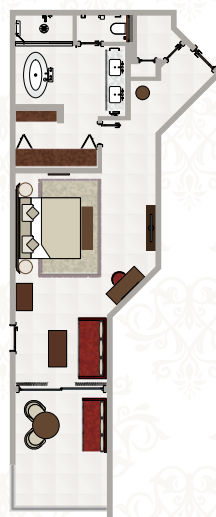
- 165 m<sup>2</sup>
- 2 adults + 1 child

### PRESIDENTIAL SUITE

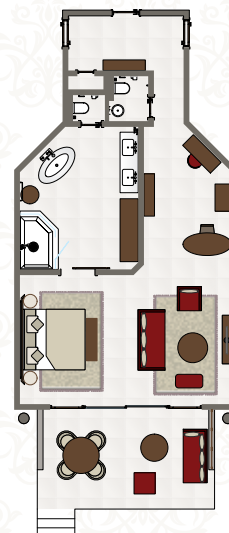
- 220 m<sup>2</sup>
- 2 adults + 2 children  
OR 4 adults

### ROYAL SUITE

- 380 m<sup>2</sup>
- 2 adults + 2 children  
OR 4 adults



• Junior Suite



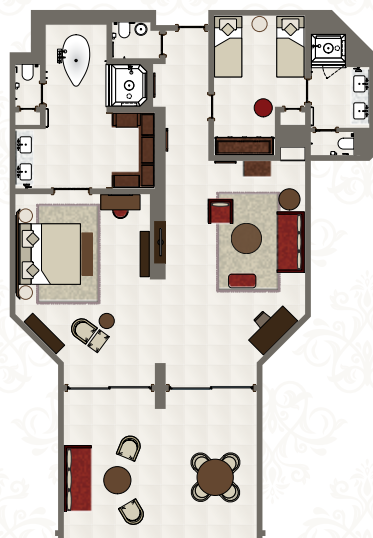
• Tropical Suite



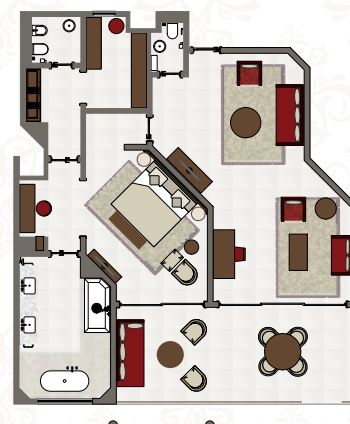
• Palm Suite



• Ocean Suite



• Garden Suite



• Senior Suite



## ROOM CAPACITY

### PENTHOUSE

- 165 m<sup>2</sup>
- 2 adults + 1 child

### PRESIDENTIAL SUITE

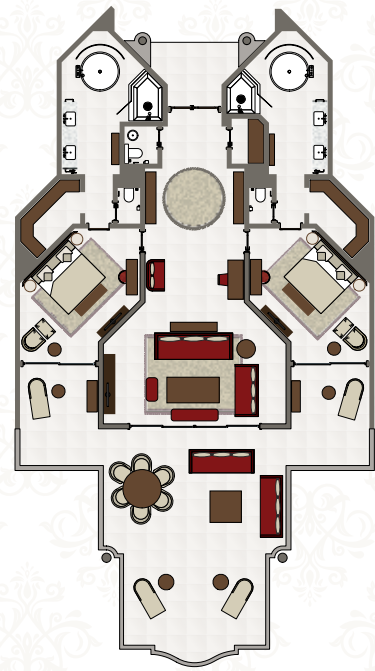
- 220 m<sup>2</sup>
- 2 adults + 2 children  
OR 4 adults

### ROYAL SUITE

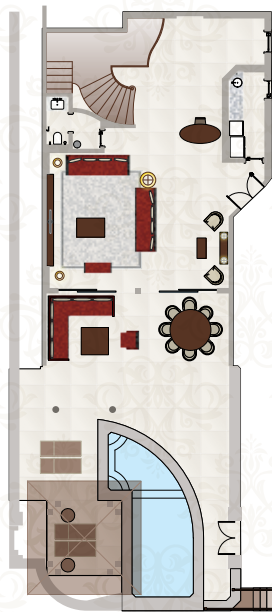
- 380 m<sup>2</sup>
- 2 adults + 2 children  
OR 4 adults



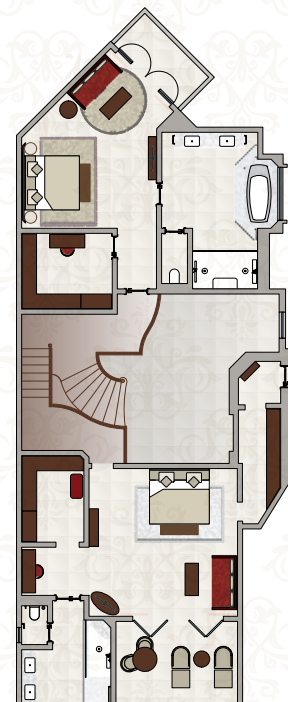
• Penthouse



• Presidential Suite



• Royal Suite - Ground floor



• Royal Suite- First floor





## RESTAURANTS & BARS

The Royal Palm carries on a reputation as a fine gourmet destination born from the encounter between unique savoir-faire and elegant service. The expertise of Michel de Matteis, winner of the 'Meilleur Ouvrier de France' (Best Craftsman of France) accolade, is recognised beyond the shores of Mauritius.



### **LA GOÉLETTE - Seating 80** **Gastronomic restaurant overlooking the bay.**

International cuisine and local specialities.

- Breakfast: "à la carte" and buffet from 7.30 a.m. to 10.30 a.m.
- Dinner: "à la carte" from 7.30 p.m. to 10.30 p.m.

### **LE BAR PLAGE - Seating 70** **Restaurant and beach bar.**

Set under a magnificent badamier tree, offering guests a relaxed and casual atmosphere. Bar is open from 10 a.m. to 5 p.m.

- Lunch: "à la carte" from 12.30 p.m. to 5 p.m.

### **LA BREZZA - Seating 40** **Italian trattoria facing the lagoon.**

- Dinner: "à la carte" from 7.30 p.m. to 10.30 p.m.

### **THE BAR**

Open from 10 a.m. to midnight.



Royal Palm is available on both bed and breakfast and half-board basis.

Dress code

- Daytime: casual
- Evening: elegant



## SPA BY CLARINS

---

Affiliated to the Clarins brand, this 1,000 m<sup>2</sup> spa is exclusively dedicated to relaxation and beauty care. The majestic entrance leads into the heart of the spa, which is built around a beautiful swimming pool and cascading ponds.

The modern, sleek single or double treatment rooms with large bay windows are housed in charming small shingle-roofed pavilions. Bathed in natural light and in an atmosphere of quiet well-being, the rooms exude serenity.

This prestigious enclave of tranquillity invites you to choose from a range of Clarins and Royal Palm's own treatments, including traditional massages, Ayurvedic treatments, or even Oriental rituals.

### **18 massage and treatment rooms offering :**

- A wide range of Clarins massages and treatments
- Royal Palm signature treatment
- Ayurvedic treatments
- Algotherapy with private hammam
- Reflexology
- Yoga, meditation
- Reiki
- 2 hammams, 2 saunas
- 2 hairdressing salons
- 2 beauty salons
- Bar
- Changing rooms
- 2 locker rooms







## SPORTS CENTRE

---

(as from 16 years old)

- 1 ground pilates studio
- 1 cardio room
- 1 fitness room
- 1 room dedicated to Kinesis and Power Plate
- 1 squash court
- Table tennis
- Bocciball
- 3 tennis courts
- Personal/group coaching

## WATER SPORTS

---

- Water-skiing
- Windsurfing
- Kayak
- Sailing
- Glass-bottom boat
- Snorkelling
- Private boat excursions
- Stand-up paddle
- Pedal boats

## ENTERTAINMENT

---

Daily live music from 7 p.m. to midnight.

## OTHER SERVICES

---

- Concierge
- “Ti Royal” kids club: housed in a spacious facility dedicated to children aged 3 to 12
- Baby-sitter: on request, 24-hour notice required
- Royal Palm boutique, Parure (jewellery boutique)
- Business Centre
- Complimentary WIFI access
- Transfers in the hotel’s vehicles, helicopter transfers
- 3 heated pools

### NON-SMOKING POLICY

Smoking is only allowed in dedicated areas.

### CREDIT CARDS

- American Express
- Visa
- Mastercard
- Diners

N.B. Personal cheques are not accepted.



